

LOC/DME I-BOS 110.3 Chan 40	APP CRS 036°	Rwy Idg 8851 TDZE 18 Apt Elev 20
--	------------------------	---

ILS or LOC RWY 4R

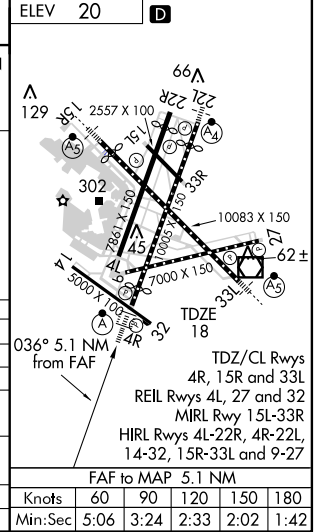
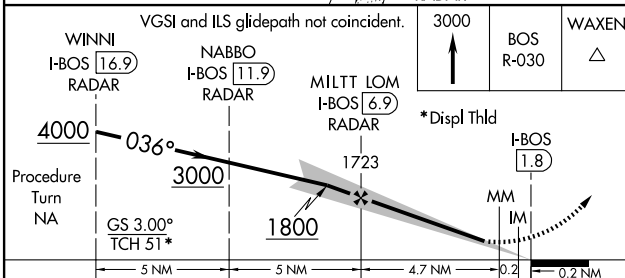
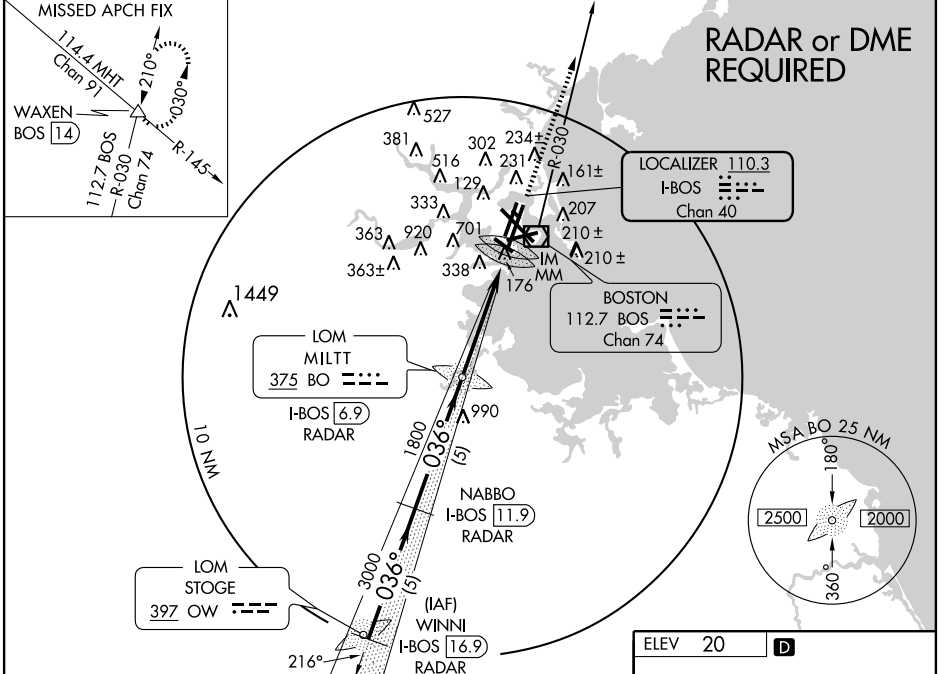
BOSTON/GENERAL EDWARD LAWRENCE LOGAN INTL (BOS)

⚠ Circling to Rwy 14 NA. Circling NA for Cats C and D west of Rwy 4L and 15R.
**** Inoperative table does not apply.**

ALSIF-2

MISSED APPROACH: Climb to 3000 via BOS R-030 to WAXEN INT/BOS 1.4 DME and hold.

ATIS ARR 135.0 DEP 127.875	BOSTON APP CON 120.6 263.1	Rwys 4R-22L, 9-27 Rwys 4L-22R, 14-32, 15R-33L, 15L-33R	BOSTON TOWER 132.225 257.8 128.8 257.8	GND CON 121.9	CLNC DEL 121.65 257.8
--	--------------------------------------	---	--	-------------------------	---------------------------------



CATEGORY	A	B	C	D
S-ILS 4R	218/18 200 (200-½)			
S-LOC 4R	440/24	422 (500-½)	440/40	422 (500-¾)
CIRCLING	940-1¼	1000-1½	640-1¾	640-2
	920 (1000-1¼)	980 (1000-1½)	620 (700-1¾)	620 (700-2)
APPROACH MINIMA WHEN CONTROL TOWER REPORTS TALL VESSELS IN APPROACH AREA				
S-ILS 4R**	359/60 341 (400-1¼)			
S-LOC 4R**	440/60 422 (500-1¼)			

ILS or LOC RWY 4R

NE-1, 23 SEP 2010 to 21 OCT 2010

NE-1, 23 SEP 2010 to 21 OCT 2010